

# Biotinylated Human IL-15RA&IL-15 Protein (Primary Amine Labeling)

Cat. No. IL1-HM1R5B

Description	
Source	Recombinant Biotinylated Human IL-15RA&IL-15 Protein (Primary Amine Labeling) is expressed from HEK293 with His tag at the C-Terminus. It contains Ile31-Ser108 (IL-15RA)&Asn49-Ser162 (IL-15).
Accession	Q13261-1 (IL-15RA)&P40933-1 (IL-15)
Molecular Weight	The protein has a predicted MW of 23.8 kDa. Due to glycosylation, the protein migrates to 25-28 kDa&30-35 kDa based on Bis-Tris PAGE result.
Endotoxin	Less than 1 EU per ug by the LAL method.
Purity	>95% as determined by Bis-Tris PAGE

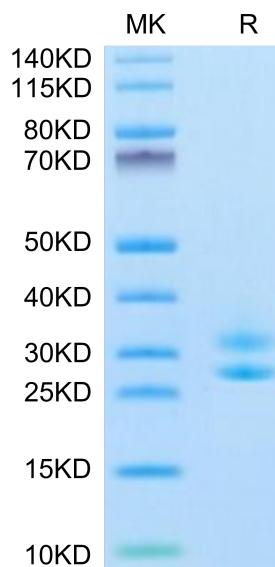
Formulation and Storage	
Formulation	Lyophilized from 0.22 µm filtered solution in PBS (pH 7.4). Normally 8% trehalose is added as protectant before lyophilization.
Reconstitution	Centrifuge the tube before opening. Reconstituting to a concentration more than 100 µg/ml is recommended. Dissolve the lyophilized protein in distilled water.
Storage	-20 to -80°C for 12 months as supplied from date of receipt. -80°C for 3 months after reconstitution. Recommend to aliquot the protein into smaller quantities for optimal storage. Please minimize freeze-thaw cycles.

**Background**

Interleukin-15 receptor alpha (IL-15R alpha) is a high affinity IL-15 binding protein that is crucial for mediating IL-15 functions such as memory CD8 T cell proliferation and NK, NK/T cell, and intestinal intraepithelial lymphocyte development.

## Assay Data

### Bis-Tris PAGE

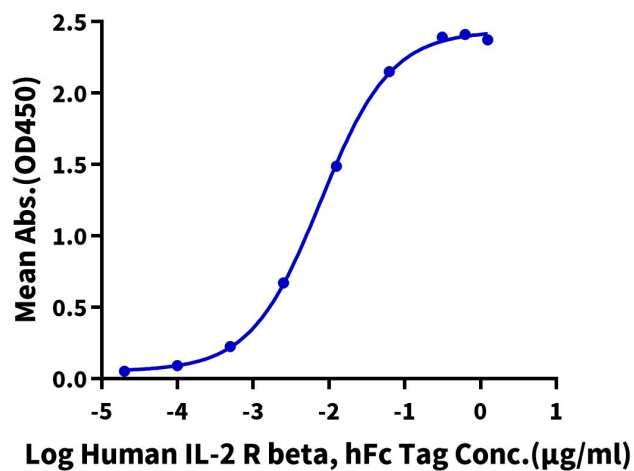


Biotinylated Human IL-15RA&IL-15 (Primary Amine Labeling) on Bis-Tris PAGE under reduced condition. The purity is greater than 95%.

### ELISA Data

### Biotinylated Human IL-15Ra&IL-15, His Tag ELISA

0.1µg Biotinylated Human IL-15Ra&IL-15, His Tag Per Well



Immobilized Biotinylated Human IL-15Ra&IL-15, His Tag at 1 µg/ml (100 µl/well) on the streptavidin precoated plate (5 µg/ml). Dose response curve for Human IL-2 R beta, hFc Tag with the EC50 of 7.8 ng/ml determined by ELISA.